

The Cleveland-Cuyahoga County Environmental Crimes Task Force is a coalition of public agencies working to end open dumping in our community.

The partners work to aggressively identify, investigate, and prosecute individuals responsible for violating the environmental laws of the State of Ohio. Such felony crimes include illegal dumping of garbage (solid waste), construction debris, and scrap tires; illegal hauling and disposal of scrap tires; scrap metal theft; illegal disposal of hazardous waste and more.

CLEVELAND



CUYAHOGA COUNTY



CITY OF CLEVELAND
Mayor Justin M. Bibb



Cuyahoga County
SOLID WASTE DISTRICT



CCBH CUYAHOGA COUNTY BOARD OF HEALTH
Your Trusted Source For Public Health Information



CourtCommunity Service
The Sentencing Alternative

Environmental Protection Agency



How to Report Illegal Dumping

In the City of Cleveland

Call 311 or the Cleveland Police non-emergency line at (216) 621-1234.

In Other Cuyahoga County Communities

Call the Cuyahoga County Sheriff's Office at (216) 217-2720 to report an illegal dump site.

If you witness illegal dumping in progress, call your local police department's non-emergency number to report the illegal activity. Once a report is made, request that they forward the report to the Environmental Crimes Task Force for investigation.

Crime Stoppers of Cuyahoga County

Crime Stoppers will pay a cash reward for information leading to the arrest and indictment of any suspected illegal dumper. Call Crime Stoppers at (216) 252-7463.

Learn More



YOU CAN HELP STOP ILLEGAL DUMPING

IN YOUR COMMUNITY

Illegal dumping is a crime against your neighborhood, health, and property values.

Learn More



Why is it important to keep your neighborhood clean?

- Dumping can bring contaminants that are bad for your health into the environment.
- Dumping contributes to the pollution of your soils and waterways.
- Having clean, well-cared-for spaces in your neighborhood improves mental health and well-being, encourages time spent together outdoors, and creates a sense of pride in the neighborhood.

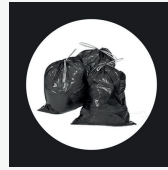
Why does dumping occur?

- Lack of education and access to proper waste disposal facilities incentivizes dumping.
- The presence of trash invites more dumping to occur, creating a cycle of illegal dumping.
- Low traffic areas without many watchful eyes make people feel like they can dump without getting caught.
- Tall grass or a lack of visibility into vacant lots makes dumping easy to hide.

How can I help prevent dumping?

- Organize a neighborhood watch and report dumping when it occurs.
- Install cameras facing driveways or the street to catch the license plates of dumping perpetrators.
- Organize and participate in community clean-ups.
- Educate your neighbors on proper disposal of waste.

TYPES OF WASTE



SOLID WASTE

Examples include household trash, litter, scrap tires.

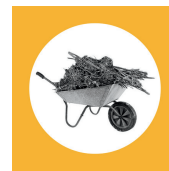
Solid waste can be set out for trash collection or bulk pickup, or hauled to a waste transfer station.



CONSTRUCTION AND DEMOLITION DEBRIS (C&DD)

Examples include shingles, wood, scrap metal.

C&DD material must be hauled to a construction and demolition debris landfill. It cannot be disposed of with regular trash at the curb.



ORGANIC WASTE

Examples include leaves, grass, tree limbs.

Organic waste can be bundled and set out for a community's yard waste or bulk pick-up. Organic waste can also be hauled to a compost facility.

PUT WASTE IN THE RIGHT PLACE

Municipal Waste Collection

Check with your municipality regarding curbside waste collection and bulk pickup. See details at cuyahogarecycles.org/recycling_in_your_community/

Dumpster Rentals and Cleanouts

Private companies offer waste management services, including cleanouts and cleanups. See options at cuyahogarecycles.org/recyclables/trash_disposal/

Waste Transfer Stations

There are no open or operating solid waste landfills in Cuyahoga County. Waste should be taken to a transfer station. See a list at cuyahogarecycles.org/waste_transfer_facilities/

C&DD Landfills

Construction & demolition debris should be taken to a special landfill or facility. See a list at cuyahogarecycles.org/construction_debris_facilities/

Compost Facilities

Organics such as tree trimmings, brush, leaves, and grass should be taken to a compost facility. See a list at cuyahogarecycles.org/compost_facilities/

Other Items

Use the dark blue 'What Do I Do With?' search bar at the top of every page of CuyahogaRecycles.org. Allow location services or use the city drop-down to find opportunities in your area.